

# **A1 in Northumberland: Morpeth to Ellingham**

**Scheme Number: TR010041**

## **6.5 Environmental Statement – Figure 7.2 Landscape Character Areas**

### **Part A**

APFP Regulation 5(2)(a)

Planning Act 2008

Infrastructure Planning (Applications: Prescribed  
Forms and Procedure) Regulations 2009

June 2020

## Infrastructure Planning

### Planning Act 2008

### **The Infrastructure Planning (Applications: Prescribed Forms and Procedure) Regulations 2009**

## **The A1 in Northumberland: Morpeth to Ellingham Development Consent Order 20[xx]**

---

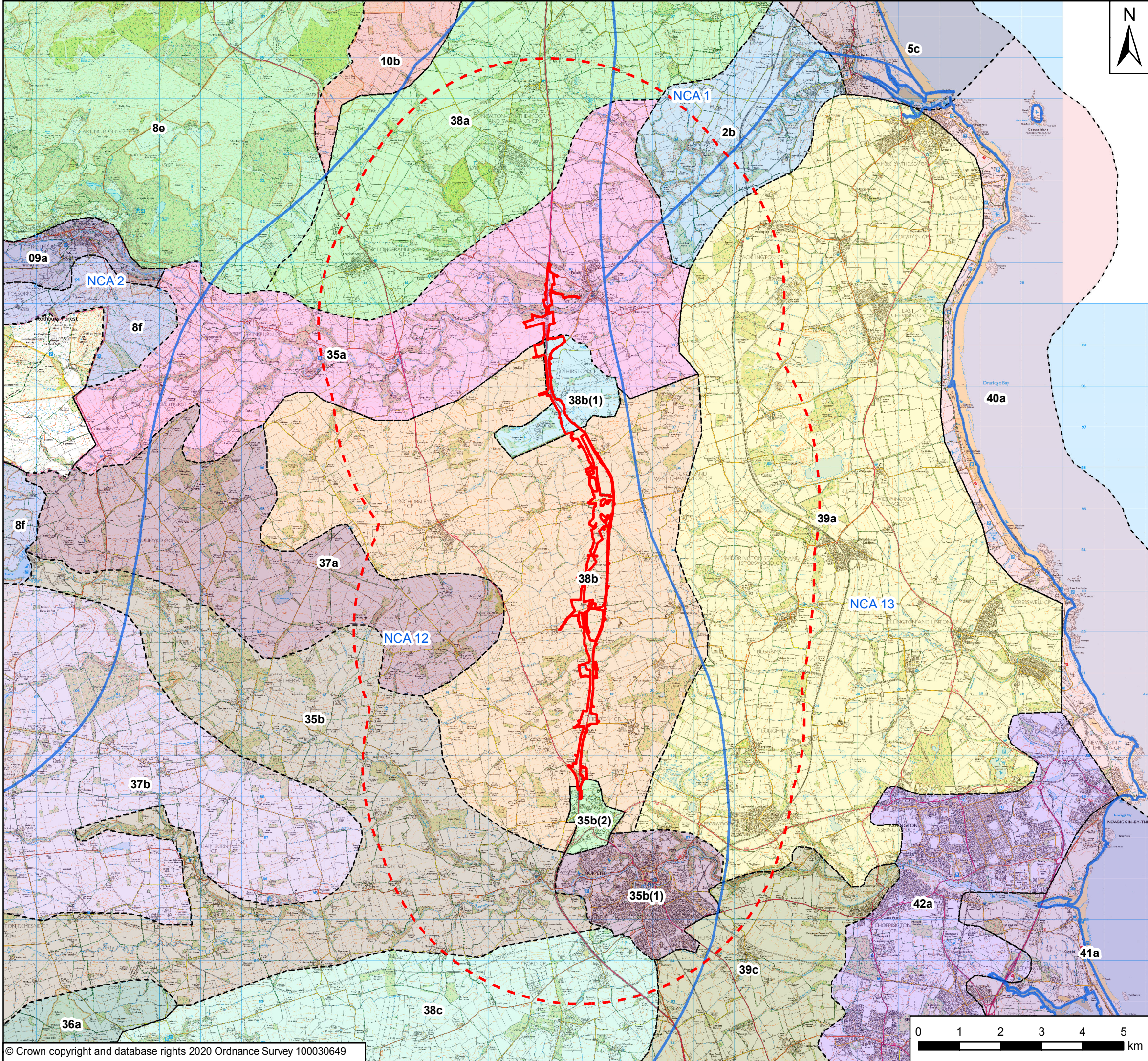
### **Environmental Statement - Figures**

---

<b>Regulation Reference:</b>	APFP Regulation 5(2)(a)
<b>Planning Inspectorate Scheme Reference</b>	TR010041
<b>Application Document Reference</b>	TR010041/APP/6.5
<b>Author:</b>	A1 in Northumberland: Morpeth to Ellingham Project Team, Highways England

<b>Version</b>	<b>Date</b>	<b>Status of Version</b>
Rev 0	June 2020	Application Issue





Order Limits

5km Study Area

National Landscape Character Area (NCA)

NCA 1, North Northumberland Coastal Plain

NCA 2, Northumberland Sandstone Hills

NCA 12, Mid Northumberland

NCA 13, South East Northumberland Coastal Plain

Local Landscape Character Assessment (LCA)

2b, Farmed Coastal Plain - Lower Coquet

5c, Sandy Coastline - Aln and Coquet Estuaries

8e, Outcrop Hills and Escarpments - Rothbury Forest

8f, Outcrop Hills and Escarpments - Harwood Forest

09a, Sandstone Upland Valleys - Coquetdale

10b, Smooth Woodland - Alnwick Moor

35a, Broad Lowland Valley - Coquet Valley

35b(1), Morpeth

35b(2), Northgate

35b, Broad Lowland Valley - Font and Wansbeck Valleys

36a, Lowland Farmed Moor - Ingoe Moor

37a, Lowland Farm Ridges - Wingates Ridge

37b, Lowland Farm Ridges - Longwiton Ridge

38a, Lowland Rolling Farmland - Longframlington

38b(1), Hub of Recreational Activity

38b, Lowland Rolling Farmland - Longhorsley

38c, Lowland Rolling Farmland - Walton and Belsay

39a, Coalfield Farmland - Coastal Coalfields

39c, Coalfield Farmland - Stannington

40a, Broad Bays and Dunes - Druridge Bay

41a, Developed Coast Blyth and Wansbeck Estuaries

42a, Urban and Urban Fringe - Ashington Blyth and Cramlington

P03	June 2020	Third Issue	GH	NM	KS
P02	05/07/19	Second Issue	GH	NM	KS
P01	02/04/19	First Issue	GH	NM	KS
Rev	Date	Description	By	Chk'd	App'd
Client					
Project Title					
A1 in Northumberland: Morpeth to Ellingham					
Drawing Title					
Figure 7.2 Landscape Character Areas					
Scale	Drawn	Checked	Approved	Authorised	
1:90,000	GH	CH	KS	DM	
Original Size	Date	Date	Date	Date	
A3	02/04/19	02/04/19	02/04/19	02/04/19	
Drawing Status				Suitability	
For Information				S1	
Drawing Number		Originator	Volume	Project Ref. No.	
Project		WSP	6.5	70044136	
HE551459				Revision	
M2F		RP	LE	1942	
Location		Type	Role	Number	
				P03	

© Crown copyright and database rights 2020 Ordnance Survey 100030649



© Crown copyright 2020.

You may re-use this information (not including logos) free of charge in any format or medium, under the terms of the Open Government Licence. To view this licence: visit [www.nationalarchives.gov.uk/doc/open-government-licence/](http://www.nationalarchives.gov.uk/doc/open-government-licence/) write to the Information Policy Team, The National Archives, Kew, London TW9 4DU, or email [psi@nationalarchives.gsi.gov.uk](mailto:psi@nationalarchives.gsi.gov.uk).

This document is also available on our website at [www.gov.uk/highways](http://www.gov.uk/highways)

If you have any enquiries about this document [A1inNorthumberland@highwaysengland.co.uk](mailto:A1inNorthumberland@highwaysengland.co.uk) or call 0300 470 4580\*.

\*Calls to 03 numbers cost no more than a national rate call to an 01 or 02 number and must count towards any inclusive minutes in the same way as 01 and 02 calls.

These rules apply to calls from any type of line including mobile, BT, other fixed line or payphone. Calls may be recorded or monitored.

Registered office Bridge House, 1 Walnut Tree Close, Guildford GU1 4LZ  
Highways England Company Limited registered in England and Wales number 09346363